

Bar-angol-ó pályázat 2020



A photograph of the Liberty Bridge in Budapest at dusk. The bridge features ornate stone arches and golden statues. In the background, a large dome is visible. The title "The Bridges of Budapest" is overlaid in white text.

The Bridges of Budapest

Megyeri Bridge

On September 28, 2006, it was announced that the bridge will be named Megyeri Bridge,, even though that name did not make it to the second round. The Hungarian Geographical Name Committee justified the final name by explaining that the bridge connects Káposztásmegyer and Békásmegyer. The Megyeri Bridge, previously known as the Northern M0 Danube bridge. This bridge was opened in September 30, 2008.

Total length: 1,862m (6,109ft)

Height: 100m (328ft)

Longest span: 300m (984ft)

This bridge cost to built 63 billion forint (300 USD dollars)



https://www.google.com/search?q=megyeri+bridge+budapest&rlz=1C1GCEA_enHU926HU926&xsrf=ALeKk02bq9j-ORVrch25vLH2vGFM6YnN-Q:1606058250950&source=lnms&tbn=isch&sa=X&ved=2ahUKEwip86ScuZbtAhXE-yoKHfrRBG0Q_AUoAnoECCgQBA&biw=1366&bih=625#imgrc=sGw57XRqHqTtTM

K-Bridge

It was built in 1955. It is 98m long. The structure was built from elements of a quick-assembled military bridge.

https://www.google.com/search?q=k+hid&sxsrf=ALeKk018c9eKb56JaHztc_HmcTRMRanFmw:1606579357876&source=lnms&tbm=isch&sa=X&ved=2ahUKEwj1rLe_zqXtAhVhwIsKHW3yAAwQ_AUoAXoECAQQAww&biw=1366&bih=625#imgsrc=hitFT1UPmsENqM



Árpád Bridge

Construction began in 1939 by the plans of János Kossalka. It was planned to be named Árpád Bridge after Grand Prince Árpád, the second Grand Prince of the Magyars. Due to World War II., the bridge was finished only after the war in 1950.

Because of the communist regime then ruling Hungary, the bridge was opened as Stalin Bridge, but after it was renamed to Árpád Bridge. The final construction works were directed by Károly Széchy and Pál Sávoly. Its length is 981m.



kép forrása: <https://pestpilis.hu/helyi/2020/04/reszleges-savlezaras-az-arpad-hidon-a-hetvegen>

Margaret Bridge

Designed by French engineer Ernest Goüin and built by the construction company Maison Ernest Goüin et Cie between 1872 and 1876, the engineer in charge was Émile Nougier. This bridge leads up to Margaret Island, two parts of which enclose 165 degrees around each other on a branch leading to the island. The reason for this unusual geometry is that the small extension connecting Margaret Island was hastily incorporated into the original plan, but was built only two decades later due to lack of money.



<https://www.google.com/url?sa=i&url=https%3A%2F%2Fwww.locationscout.net%2Fhungary%2F28612-margitsziget-under-the-margit-hid-47515153-19043747&psig=AOvVaw2vBKuFGdTvIyI99k3c6KjT&ust=1606666589120000&source=images&cd=vfe&ved=0CAIQjRxqFwoTCOj089jRpe0CFQAAAAAdAAAAABAD>

Széchenyi Chain Bridge

1849, November 20.-án fejezték be a Lánchíd építését. The Chain Bridge was built on 20th of November, 1849. William Tierney Clark tervei alapján készült. It was made by the plans of William Tierney Clark. Ez a gyönyörű híd 380m hosszúságú. This wonderful bridge is 380m long. A Széchenyi Lánchíd Magyarország legrégebbi és leghíresebb hídja. The Széchenyi Chain Bridge is the oldest and the most famous bridge in Hungary. A
| |. Világháború végén a Német Hadsereg felrobbantotta hazánk legöregebb hídját. At the end of | |. World War our oldest bridge was burnt down by the German Army. Once, Will Smith danced on it.



<https://images.app.goo.gl/x8EKWTtm3GQRCFLS7>

Elisabeth Bridge

Elisabeth Bridge is the third newest bridge of Budapest, Hungary, connecting Buda and Pest across the River Danube. The bridge is situated at the narrowest part of the Danube in the Budapest area, spanning only 290 m. It is named after Elisabeth of Bavaria, a popular queen and empress of Austria-Hungary, who was assassinated in 1898. Today, her large bronze statue sits by the bridge's Buda side connection in the middle of a small garden. The original eclectic flamboyant style bridge was built between 1897 and 1903. It was subsequently destroyed during the WW2, and a significantly simplified brutalist version was built without any ornamentation between 1961–1964.



[https://www.google.com/url?sa=i&url=https%3A%2F%2Fen.wikipedia.org%2Fwiki%2FElisabeth_Bridge_\(Budapest\)&psig=AOvVaw2di2xRriyaqhK8OJEVnwoF&ust=1606666165468000&source=images&cd=vfe&ved=0CAIQjRxqFwoTCMDUuKXQpe0CFQAAAAAdAAAAABAI](https://www.google.com/url?sa=i&url=https%3A%2F%2Fen.wikipedia.org%2Fwiki%2FElisabeth_Bridge_(Budapest)&psig=AOvVaw2di2xRriyaqhK8OJEVnwoF&ust=1606666165468000&source=images&cd=vfe&ved=0CAIQjRxqFwoTCMDUuKXQpe0CFQAAAAAdAAAAABAI)

Liberty Bridge

It is the third southernmost public road bridge in Budapest, located at the southern end of the City Centre. The bridge was originally named Ferenc József híd (Franz Joseph Bridge). János Feketeházy built it. It's 334-meter-long 1896.



https://www.google.com/search?q=szabads%C3%A1g+h%C3%ADd&rlz=1C1CHBD_huHU926HU926&sxsrf=ALeKk03YoHSNJvuFgacYAodMrxyju10DcA:1606578455922&source=lnms&tbm=isch&sa=X&ved=2ahUKEwi_yKyRy6XtAhXu1uAKHTaVAisQ_AUoAXoECACQAw&biw=1366&bih=625#imgc=f3S8jRif8mMoBM

Petőfi Bridge

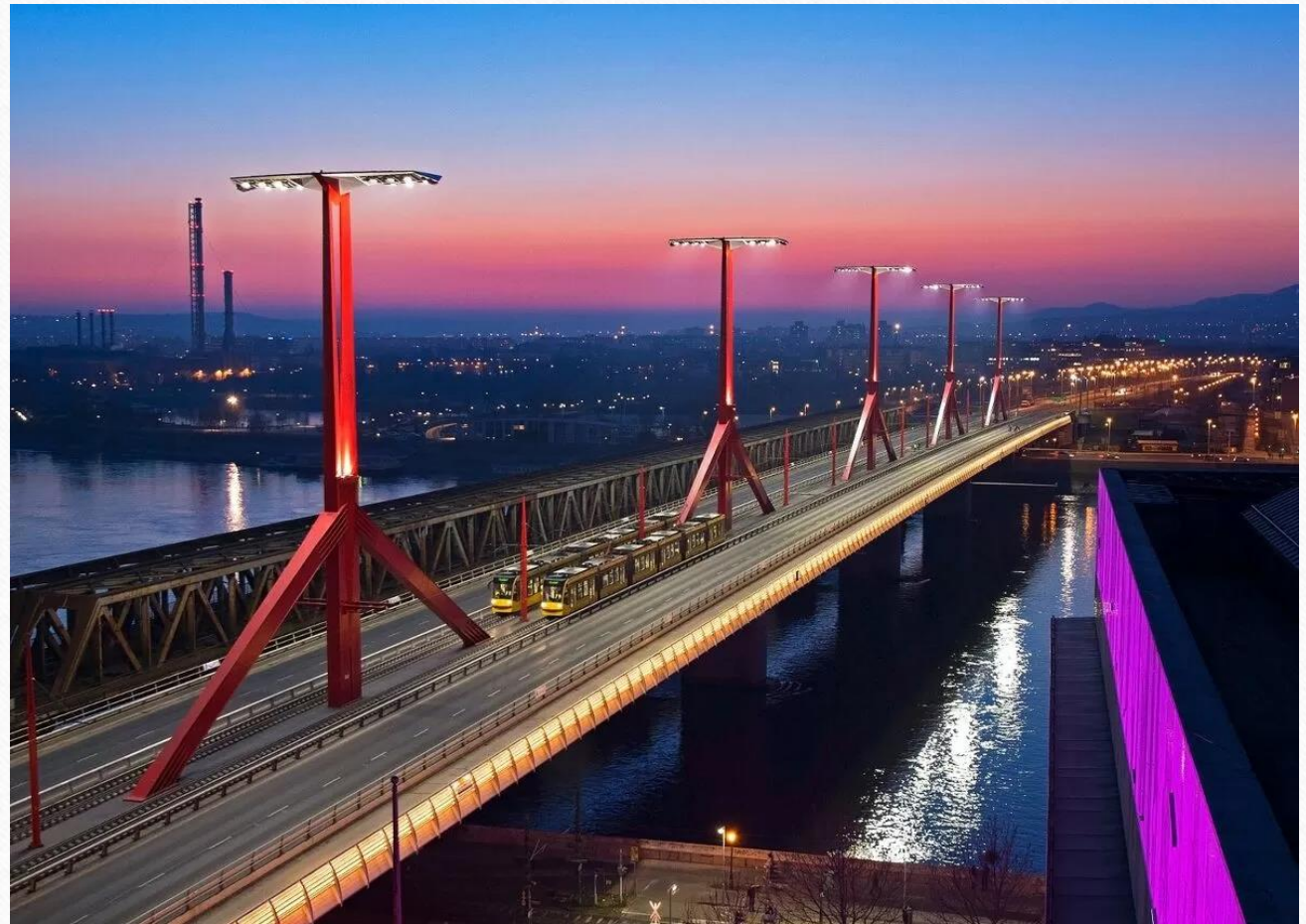
Petőfi Bridge was built between 1933–1937, according to the plans of Hubert Pál Álgiai. It's 514m in length and 25.6m in width. The name of the bridge was originally Horthy Miklós Bridge, named after the governor. They changed it not so long time after it for Petőfi Bridge, after the famous poet of Hungary. People wanted to build the bridge in the early 1900s, but they could only start it after World War I. After World War II, people rebuilt it, that's the form we can see nowadays.



https://en.wikipedia.org/wiki/File:Budapest_Petofi_Bridge.jpg

Rákóczi Bridge

Rákóczi Bridge is a bridge in Budapest, Hungary, connecting the settlements of Buda and Pest across the Danube. The construction of the steel girder bridge was started in 1992 to the plans of Tibor Sigrái. This bridge is the southernmost, and the second newest, public bridge in the capital; it was inaugurated in 1995. Its Pest end is a station of Csepel HÉV, and the venue of the new Hungarian National Theatre (2002) and the Palace of Arts (2005). It's 494,8 m length, and 30,6 m width.



https://www.google.com/url?sa=i&url=https%3A%2F%2Fwww.mageba-group.com%2Fhu%2Fen%2F1023%2FEurope%2FHungary%2F62418%2FR%25C3%25A1k%25C3%25B3czibridge.htm&psig=AOvVaw2KbQQ7mgJC7EiiWfN509qQ&ust=1606666090519000&source=images&cd=vfe&ved=0CAIQjRxqFwoTCOi_tOvPpe0CFQAAAAAdAAAAABAD

Connective Railway Bridge

The Connective Railway Bridge (Hungarian: Összekötő vasúti híd) is lying between Ferencváros and Kelenföld station in Budapest. The double-tracked bridge opened for traffic in 1877. In 1913 the weakened bridge was rebuilt. The new bridge was destroyed during World War II, after the war a provisional single track bridge was built. The finally twin-structure was built in 1948 and 1953. The three pillared railway bridge is 393 m long over the Danube river, the complete structure is 477 m long.



<https://www.google.com/url?sa=i&url=https%3A%2F%2Fmagyarepitok.hu%2Fvasutfejlesztes%2F2020%2F04%2Ffelrajtolt-a-fovaros-egyik-fontos-projektje-megujul-a-deli-osszekoto-vasuti-hid&psig=AOvVaw0vMITrhyPtDhb1GdKB5uBv&ust=1606665850669000&source=images&cd=vfe&ved=0CAIQjRxqFwoTCND2sqHPpe0CFQAAAAAdAAAAABAD>

Kvassay Bridge

This bridge is located on the Ráckevei-Duna. It was built in 1926, but there were many rebuilds, so the current bridge's buildig was actually ended in 2006. The name of the bridge is from Kvassay Jenő. It's lenght is 94,4m and widht is 12+9 m.



https://www.google.com/search?q=kvassay+h%C3%ADd&sxsrf=ALeKk03N-qjP_tYqoIKYmLKBzwm83IFENQ:1606154281897&source=lnms&tbm=isch&sa=X&ved=2ahUKEwit5bT7npntAhWyxIsKHfzoD3kQ_AUoAXoECCYQAw&biw=1366&bih=657#imgsrc=VfADirzUij1jMM&imgdii=LIZAW_GftK-kM